

See discussions, stats, and author profiles for this publication at: <https://www.researchgate.net/publication/362225006>

# The Efficiency of Steel Plate Biomass Briquette Stove with Variation of Aluminum Cylinder Diameter

Conference Paper · November 2019

CITATIONS

0

READS

3

5 authors, including:



**Sallolo Suluh**

Universitas Kristen Indonesia Toraja

12 PUBLICATIONS 17 CITATIONS

[SEE PROFILE](#)



**Zuryati Djafar**

Universitas Hasanuddin

47 PUBLICATIONS 130 CITATIONS

[SEE PROFILE](#)



**Novriany Amaliyah**

Universitas Hasanuddin

30 PUBLICATIONS 40 CITATIONS

[SEE PROFILE](#)



**Wahyu H. Piarah**

Universitas Hasanuddin

49 PUBLICATIONS 222 CITATIONS

[SEE PROFILE](#)

Some of the authors of this publication are also working on these related projects:



Biomass material of capasitor [View project](#)



Light energi [View project](#)

7

# PROCEEDING

## The 8<sup>th</sup> Joint Conference on Renewable Energy and Nanotechnology 2019 (JCREN 2019)

ISBN 978-979-18011-3-3

November 5-6, 2019

Gowa Campus, Hasanuddin University,  
Indonesia



HIROSHIMA UNIVERSITY



จุฬาลงกรณ์  
มหาวิทยาลัย  
CHULALONGKORN UNIVERSITY



EHIME UNIVERSITY



Kyutech  
Kyushu Institute of Technology



KYUSHU INSTITUTE OF DESIGN



YAMAGUCHI  
UNIVERSITY



NANOTEC<sup>TM</sup>  
a member of NSTDA

KMITL  
Kasartornrajavidyalaya University



Sponsored by:

 **TOYO KOATSU**



PLN

**PROCEEDING**

**The 8<sup>th</sup> Joint Conference on Renewable  
Energy and Nanotechnology 2019  
(The 8<sup>th</sup> JCREN 2019)**

**Improving International Networks and  
Research Collaboration**

**Gowa Campus, November 5 – 6, 2019**

Department of Mechanical Engineering  
Faculty of Engineering  
Universitas Hasanuddin  
Indonesia

**PROCEEDING**  
**The 8<sup>th</sup> Joint Conference on Renewable Energy and  
Nanotechnology 2019**  
**(The 8<sup>th</sup> JCREN 2019)**

**Improving International Networks and Research Collaboration**

**Organized by :**

Universitas Hasanuddin

**Co-organized by :**

Chulalongkorn University (CU), Ehime University (EU), Hiroshima University (HU), King Mongkut's Institute of Technology Ladkrabang (KMITL), Kyoto University (KU), Kyushu Institute of Technology (KIT), National Nanotechnology Center (NANOTEC), Okayama University (OU), Prince of Songkla University (PSU), Rangsit University (RSU), Tokyo University of Science (TUS), Yamaguchi University (YU)

**Conference Chairs :**

Andi Erwin Eka Putra (Universitas Hasanuddin), Chair

Yukihiro Matsumura (Hiroshima University), Vice chair/General manager

Tawatchai Charinpanitkul (Chulalongkorn University), Vice chair/Thai representative

**Secretary :** Azwar Hayat (Universitas Hasanuddin)

**Treasurer :** Novriany Amaliyah (Universitas Hasanuddin)

**Steering Committee :**

Muhammad Arsyad Thaha (Universitas Hasanuddin), Nasaruddin Salam (Universitas Hasanuddin),

Ilyas Renreng (Universitas Hasanuddin), Onny S. Sutresman (Universitas Hasanuddin), Wahyu H.

Piarah (Universitas Hasanuddin)

**Reviewer :**

Yukihiro Matsumura (Hiroshima University), Tawatchai Charinpanitkul (Chulalongkorn University),

Shinfuku Nomura (Ehime University), Ken-Ichiro TANOUE (Yamaguchi University), Andi Erwin

Eka Putra (Universitas Hasanuddin)

**Editorial Board :**

Acharya Suriyawong (Chulalongkorn University), Akihiko Horibe (Okayama University), Akihiko

Horibe (Okayama University), Anita Bt Ramli (Universiti Teknologi Petronas), Apiluck Eiad-ua

(King Mongkut's Institute of Technology Ladkrabang), Apinan Sootittantawat (Chulalongkorn

University), Chalida Klaysom (Chulalongkorn University), Esmat Maleki (University of Malaya),

Hiroshi Katsurayama (Yamaguchi University), Hiroki Suzuki (Yamaguchi University), Hiromichi

Toyota (Ehime University), Kajornsak Faungnawakij (National Nanotechnology Center), Ken-ichiro

TANOUE (Yamaguchi University), Kiyoshi Dowaki (Tokyo University of Science), Komkrit

Suttiponparmit (PTT Research and Technology Institute), Kreangkrai Maneintr (Chulalongkorn

University), Lam Man Kee (Universiti Teknologi Petronas), Machi Kanna (Hiroshima University),

Masato Mikami (Yamaguchi University), Masaya Nakahara (Ehime University), Minato Wakisaka

(Kyushu Institute of Technology), Nataporn Sowasod (King Mongkut's University of Technology

North Bangkok), Nawin Viriya-empikul (National Nanotechnology Center), Nor Hisham B Hamid (Universiti Teknologi Petronas), Noriaki Sano (Kyoto University), Nuttapol Limjeerajarus (Thai-Nichi Institute of Technology), Nuttapol Tanadchangsang (Rangsit University), Palang Bumroongsakulsawat (Chulalongkorn University), Paravee Vas-umnuay (Chulalongkorn University), Pilasinee Limsuwan (King Mongkut's University of Technology North Bangkok), Pimporn Poonpetch (Chulalongkorn University), Pramote Puengjinda (Yamanashi University), Pusanisa Patharachotesawate (Chulalongkorn University), Sira Srinives (Mahidol University), Shinnichi Namba (Hiroshima University), Shinfuku Nomura (Ehime University), Shinobu Mukasa (Ehime University), Shinsuke Mochizuki (Yamaguchi University), Shuhei Inoue (Hiroshima University), Suracha Udomsak (SCG Chemicals), Sutee Chutipajit (King Mongkut's Institute of Technology Ladkrabang), Suthatip Sinyoung (Mahidol University), Suwanna Boontanon (Mahidol University), Suzana Bt Yusup (Universiti Teknologi Petronas), Takayuki Ichikawa (Hiroshima University), Takehiko Seo (Yamaguchi University), Trakarn Prapasongsa (Mahidol University), Varong Pavarajarn (Chulalongkorn University), Watcharop Chaikittisilp (The University of Tokyo), Wimonmas Boonyungyuen (Mahidol University), Winadda Wongwiryapan (King Mongkut's Institute of Technology Ladkrabang), Wipawadee Wongsuwan (Thai-Nichi Institute of Technology), Yasushi Shibuta (The University of Tokyo), Yoshisugu Kojima (Hiroshima University), Yutaka Nakashimada (Hiroshima University), Yuushou Nakayama (Hiroshima University).

**Editor :**

Azwar Hayat, Gerard Antonini Duma, Asriadi Sakka

**Setting Layout :** Muh. Firdan Nurdin

**Publisher :**

Department of Mechanical Engineering, Faculty of Engineering, Universitas Hasanuddin, Indonesia

**Editorial Staff :**

Jalan Poros Malino, Km. 6, Bontomarannu, Gowa, Sulawesi Selatan, Indonesia, 92171

<https://eng.unhas.ac.id/mesin/id/page/1033174/jcren-2019.html>

email: [jcren2019@eng.unhas.ac.id](mailto:jcren2019@eng.unhas.ac.id)

© 2019. All rights reserved.

ISSN 2798-9791-10111-1-3



9 789791 801133

## Message for JCREN2019 from Thailand

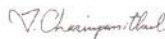
Prof. Tawatchai Charinpanitkul



With the total population of more than 270 Million and consisting of more than 17,000 islands with over 1.9 million square miles of land, Indonesia is the 4th largest country with growing potential. Abundant unique natural resources and excellent human resource are strength of this great country. To serve the continuous growth of the country and the whole region, Indonesia has contributed a lot in developing and supplying energy, food, technology and many issues. Among those emerging issues, Renewable Energy and Nanotechnology have drawn attentions from multi-lateral collaboration among many stakeholders. With the dedication of Universitas Hasanuddin, it is a great opportunity that JCREN could be expanded to become a broader and energetic network among Indonesia, Japan, Malaysia, Philippines, Thailand, and other alliance countries. The 8<sup>th</sup> JCREN or JCREN2019 has been well organized in the beautiful campus of Department of Mechanical Engineering, Universitas Hasanuddin situated in Makassar, Sulawesi Island, which is the biggest city in the Eastern part of Indonesia. All arrangement of JCREN2019 has followed the same objective as that of the previous JCRENs, which has focused on providing academic and cultural exchange as well as fostering young generation for contributing to the whole society. As a result, continual and innovative topics covering Renewable Energy, Nanotechnology, Chemical Engineering, Environmental Engineering, Mechanical Engineering, and other relevant fields are emphasized to stimulate the intimate and friendly meeting among academia, researchers and industrial entrepreneurs. New opportunities in utilizing new knowledge and experiences would be shared and discussed in either oral or poster sessions in JCREN2019. Additionally, a technical excursion would also provide good opportunity for all participants to broaden their vision. With all mentioned aspects, I am confident that JCREN2019 would certainly remark some impressive memories for all.

I would like to take this opportunity to extend my sincere gratitude to all organizing committee members, especially, Prof. Andi Erwin E. Putra and all colleagues of Universitas Hasanuddin as well as all alliance institutions for their dedication to the successful JCREN2019. Certainly, many respectful supports from all industrial partners would also be acknowledged. Last but not least, I am confident that the success of JCREN2019 would help strengthen our multilateral collaboration in the field of Renewable Energy and Nanotechnology which would be beneficial to our global society.

(Prof. Tawatchai Charinpanitkul)  
Associate Dean for Academic Affairs  
Faculty of Engineering, CHULALONGKORN University, Thailand



- RE 8. Plasma Treatment in-Water Processes of Sugarcane Bagasse  
*Andi Amijoyo Mochtar, Jalaluddin Hadda, Rafiuddin Syam and Amirullah Amirullah* 43 – 46
- RE 9. Optimization of Methane Gas using Active Charcoal Purification, Plantain Banana Skin and Cows Waste in Biogester  
*Pongsert Sriprom, Pornyamon Leephisuth, Arthit Neramittagapong and Sutasinee Neramittagapong* 47 – 50
- RE 10. Optimization of lignin conversion by hydrothermal process for recovery of vanillin  
*Khairil Anwar, Syukri Himran, Luther Sule and Nasruddin Azis* 51 – 60
- RE 11. Performance of Bach-type Savonius Wind Turbine with Modification of Straight Blade Angle  
*Jufri, Daeng Paroka, Jalaluddin and Rustan Tarakka* 61 – 68
- RE 12. Simulation of Sea Wave Energy Absorption Based on Overview of Wave Height, Shape and Size of Buoyancy  
*Luther Sule, Andi Amijoyo Mochtar, Jalaluddin Hadda, Rafiuddin Syam and Aksan Eji* 69 – 72
- RE 13. Axial Fan Performance using Variation of Number of Blades in Flow Direction  
*Abdul Muis and Muhammad Sadat Hamzah* 73 – 82
- RE 14. Design and Development of Crossflow Turbine for Low Head Application  
*Mustofa, Basri, Hasan Basri, Jumiyatun, Irwan Mahmudi, Haryanto, Zuryati Djafar and Wahyu H. Piarah* 83 – 91
- RE 15. Low Sun Spectrum on Simulation of an Amorphous Silicon Photovoltaic and Thermoelectric Generator Hybrid  
*Azwar Hayat, Rafiuddin Syam, Ilham, and Yasser Ridha Muslim* 92 – 99
- RE 16. Performance analysis of flexible solar panels on electric motorcycles with flat and curved mounting positions  
*Sallolo Suluh, Abd Rauf Musadat, Zuryati Djafar, Novriany Amaliyah, and Wahyu H. Piarah* 100-106
- RE 17. The Performance of Biomass Briquette Stoves Made of Steel Plates with Aluminum Sheets Diameter Variations

#### Nano Technology

- Riku Yamada, Shinobu Mukasa, Ryota Kikuchi, Koichiroh Sakai and Shinfuku Nomura* 107 – 110
- NA 1. Sintering of Copper Nanoparticles Synthesized by Pulsed Discharge Method in Methanol  
*Meutia Farida, Ilhan Alimuddin, Asri Jaya, Lily Fauzielly and Jimmi Nugraha* 111 – 117
- NA 2. Identifying the Calcareous Nanofossils from Tonasa Limestone Karama Section Jeneponto Area South Sulawesi, Indonesia

# The Efficiency of Steel Plate Biomass Briquette Stove with Variation of Aluminum Cylinder Diameter

S. Suluh<sup>2</sup>, A.R Musadat<sup>1</sup>, Z. Djafar<sup>1\*</sup>, N. Amaliyah<sup>1</sup>, W.H. Piarah<sup>1</sup>

<sup>1</sup>Mechanical Engineering Department, Universitas Hasanuddin, Gowa, Indonesia, 92171

<sup>2</sup>Mechanical Engineering Department, Universitas Kristen Indonesia Toraja, 91817

\* Correspondence author: [zuryatidjafar@unhas.ac.id](mailto:zuryatidjafar@unhas.ac.id)

## Abstract

Aluminum has been known with the properties of lightweight and not easily corroded. It also has good thermal conductivity property. This reason motivates authors to modify the combustion chamber of the briquette stove with the addition of an aluminum cylinder to increase the stove performance. This research examines the thermal efficiency of biomass briquette stove using candlenut charcoal briquettes by providing 5 variations of aluminum cylinder diameter inside the stove combustion chamber shell. The cylinder diameter varies from 140, 150, 160, 170 and 180 mm to observe the comparative thermal efficiency and combustion temperature character. The briquette stove material was made of steel and the cylinder material added inside combustion chamber was made of Aluminum. The form of briquette used is the shape of a wasp nest. The results show that aluminum sleeve diameter of the 140 mm with candlenut shell briquettes has an optimum thermal efficiency of 28.9% with input power and output power of 0.40 kW, 1.40 kW respectively.

## 1. Introduction

One of the most significant current discussion are the increasing of fuel energy consumption and limited quantities of fossil fuel. Many efforts have been done to explore alternative energy sources.

Unlike fossil fuel, biomass does not take millions of years to develop and can be reproduce, and for that reason, it is considered has a renewable character. Biomass is formed from the living species like plants and animals. A vast amount of biomass grow through photosynthesis by absorbing CO<sub>2</sub> from the atmosphere. It can be considered as carbon neutral since it releases the carbon dioxide when it burns, but only recently. Thus, the burning of biomass does not make any addition to the earth.

These are what attracts researchers to utilize the remaining biomass, especially biomass from plant such as candlenut shells in the form of charcoal briquettes. A number of researchers have been reported a utilization of candlenut shell as a fuel. Njenga, et al [1] has been found that a charcoal briquettes can increase energy, reduce deforestation and have low emissions. Faryda, et al [2] shows a mixture of candlenut charcoal briquettes and rice husk with a ratio of 70%:30% produces good porosity of only 1.7%. The ratio of candlenut shells to other charcoal produces energy of 46.98 Watt [3]. And Daud Patabang, et al, [4] found that the addition of 90% candlenut shell charcoal to coal charcoal can reduce SO<sub>x</sub> emission levels up to 80.67%.

The efficiency of briquette stove is an important aspect to provide better heat transfer contained in the briquette. Several studies have conducted in modifying briquette stove. Ji Wang, et al.,[5] have found that the modifications of the stove can produced a thermal efficiency of 68%. Arif Effendy and Suluh Sallolo[6] have investigated that the addition of an aluminum cylinder to a briquette stove produced thermal efficiency equal to 70.73% The previous studies without modification stoves Bolaji And Olalusi [7] and Er. Bhakta, et al [8] resulted in maksimal thermal efficiency of only 28.2% and 17%.

In this study, modification of briquette steel using steel material combined with aluminum cylinder inside the combustion chamber is investigate to obtain maximal thermal efficiency.

## 2. Material and Methods

The briquette stove is made from steel plates with dimension of 300 mm of high, 220 of mm outside diameter, 200 mm of inner diameter, and seat distance from the stove bottom of 10 mm, as in figure 1.



Fig. 1 Steel stove

The type of biomass used in this study was candlenut shell waste with a wasp nest form. The wasp nest form has been known had a larger flame surface area [6]. The cylinder diameter was added inside the combustion chamber and varies from 140, 150, 160, 170 and 180 mm to observe the comparative thermal efficiency and combustion temperature character. The combustion chamber is lined with aluminum plate walls which have an air holes with a diameter of 10 mm with a distance of 20 mm between holes along the diameter of the upper cylinder as seen in figure 2.



Fig. 2. Cylinder of a steel stove

The testing parameters used in determining the value of the heat value using the equation are as follows [6]:

$$\text{Value calor HHV (cal/g)} = (T_A - T_M) / m \times 2458 \text{ calori} \dots \dots \dots (1)$$

Where:

- $T_A$  = The final temperature of combustion in the calorimeter bomb (°C)
- $T_M$  = The initial temperature of combustion in the calorimeter bomb (°C)
- $m$  = sample weight (g)
- 2458 = Calorimeter bomb coefficient

The several test parameters to analyze the value of the thermal efficiency of the briquette stove by adding variations of cylinder diameter inside the combustion chamber are using the following equation[5]:

1. Output Power (Pout)

Output (Pout) is the ratio between the energy used to heat water to the length of time it takes to reach boiling point. The translation of the formula is as follows:

$$P_{out} = \frac{M_w \times C_{p_{air}} \times (T_f - T_i)}{t} \dots \dots \dots (2)$$

Where :

- Pout : Output Power (watt).
- Cpair : The specific heat of water 4.1866 (kJ/kg °C).
- Ti : Initial temperature of water (°C).
- Tf : Final Temperature Of water (°C).
- t : Time to heat the water

2. Input Power (Pin)

Input Power (Pin) is the ratio between the energy contained in a fuel and the length of time in the combustion process. The translation of the formula is as follows:

$$Pin = \frac{m_f \times LHV}{t} \dots \dots \dots (3)$$

Where :

- Pin : Input Power (kW).
- LHV : heating value under fuel (KJ/Kg. 0C).
- t : time to heat the water (s)

3. Thermal Efficiency (ηth )

Thermal efficiency is the ratio between the net power used to heat water and the fuel combustion power. The translation of the formula is as follows :

$$\eta_{th} = \frac{P_{out}}{P_{in}} \times 100\% \dots \dots \dots (4)$$

Where :

- Pin : Input Power (kW).
- Pout : Output Power (kW).
- ηth : Thermal Efficiency (%)

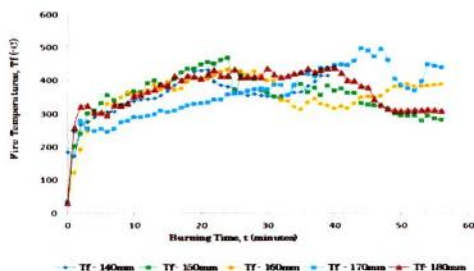
### 3. Results and Discussion

The process of this research begins with the manufacture of briquettes, heating value and combustion test (performance) on a combustion stove with a variation of 5 sizes of shell casings on a steel burning stove with a variation of one types of candlenut shells. The test results are summarized as in Table 1.

**Table 1.** Recapitulation of the measurement values and testing of 5 furnace variations cylinder diameter of the combustion chamber

DB (kg)	DV (mm)	ma (kg)	mbt (Kg)	B.T (MO)	Ltb (MO)	P out (kw)	P in (kw)	P losses (kw)	ηth (%)
Candlenut Shells	180	5	175	25	56	0,24	0,84	0,60	28,72
	170	5	165	31	56	0,37	1,35	0,98	27,42
	160	5	155	31	56	0,32	1,13	0,82	27,84
	150	5	145	24	56	0,30	1,03	0,73	28,74
	140	5	135	25	44	0,41	1,41	1,00	28,97

The best efficiency of 28.97% was obtain at the cylinder diameter of the combustion chamber of 140 mm by 28.97%.



**Fig 3.** Flame temperature versus burning time

Figure 3 shows the characteristics of the flame temperature of each diameter of the combustion chamber. The magnitude of the temperature of each flame is 140 mm by 433°C, 150 mm by 467°C, 160 mm by 432°C, 170 mm by 496°C and 180 mm by 440°C. It can be seen that the best flame temperature was obtained in the combustion chamber with a diameter of 170 mm, an ignition time of 56 minutes with a flame temperature of 496°C. Larger diameter of the cylinder result in more air inside the

combustion chamber and make the rate of combustion become faster. It is somehow not observed in the diameter of 180 mm due to the close position with outer surface of the stove that influenced by the environmental air.

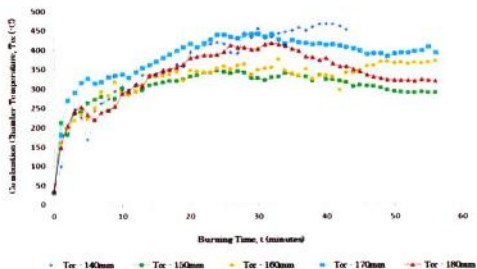


Fig 4. Combustion Chamber Temperature Versus Burning Time

Figure 4 shows the characteristics of the combustion chamber temperature of each diameter of the aluminum cylinder. The magnitude of the combustion chamber temperature are 140 mm by 466°C, 150 mm by 345,5°C, 160 mm by 408,5°C, 170 mm by 440,5°C and 180 mm by 416,5°C. The phenomenon shows the tendency of the combustion chamber which is further from the stove wall (closer to the combustion chamber) has a maximum temperature of 466°C at 140 mm cylinder diameter, although the combustion time only takes 46 minutes. This is much different from the temperature of the combustion chamber of other cylinder diameters. They tend to have a combustion time of 56 minutes, but a low combustion chamber temperature. The smaller the diameter of the cylinder, the longer in maintaining its heat due to good heat supply insulation and the hot air chamber of the briquette is more tight and focused so the rate of heat transfer is more maximal.

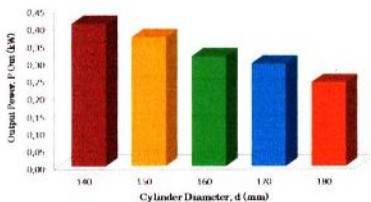


Fig 5. Output Power Of Cylinder Diameter

It can be observed in figure 5 that the best output power is 140 mm of cylinder diameter of 1.41 kW. This shows that the density of the combustion chamber towards the briquette has an effect in transferring the heat of the briquette to the stove.

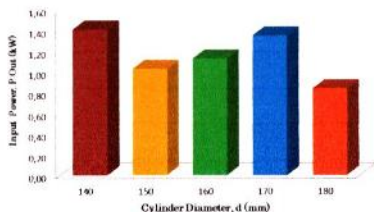


Fig 6. Input power of Cylinder Diameters

In figure 6 can be observed that the highest input power of 1.41 kW was obtained at is the cylinder diameter of a 140 mm. The results show that the greater calorific value of the biomass charcoal briquettes used result in greater input power used.

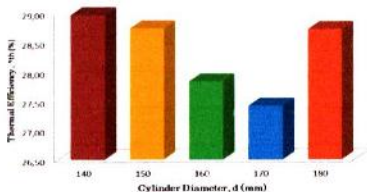


Fig 7. Thermal Efficiency of Cylinder Diameters

Figure 7 shows the influence of cylinder diameter to the thermal efficiency. It can be seen that the best thermal efficiency of 28.97% observed at 140 mm of cylinder. The smaller the diameter of the cylinder, the better the thermal efficiency produced due to the hot air chamber of the briquette is tighter and focused so the rate of heat transfer is more maximal.

#### 4. Conclusion

- The best input power is shown in 140 mm cylinder diameter of 1.41 kW.
- The best output power is produced at 140 mm cylinder diameter of 0.41 kW
- The optimum thermal efficiency of 28.97% was produced from a 140 mm cylinder diameter.

#### 5. References

- [1] M. Njenga et al., 2016 "Additional cooking fuel supply and reduced global warming potential from recycling charcoal dust into charcoal briquette in Kenya," *J. Clean. Prod.*, vol. 81, pp. 81–88, 2014.
- [2] Faryda Veronica Lamma Koly, et al., 2018 Porosity test mixture based charcoal briquette candlenut shells (*aleurites moluccana*) and charcoal husk rice (*oryza sativa*) Department of Chemistry, Faculty of Mathematics and Natural Sciences, University of Kalabahi, Tribunah
- [3] B. H. Tambunan et al., 2014 "A Preliminary Study on Use of Candlenut Shell as a Renewable Source of Energy, Min Indonesia Journal of Ocean, Mechanical and Aerospace Science and Engineering", Vol.9 Vol.9, July 2014 ISSN 2354-7065
- [4] Daud Patabang, et Al, 2019 The Effect Of Adding Candlenut Shell Into The Low-Rank Coal On Combustion Performance Journal of Mechanical Engineering Research & Developments (*JMERD*) Issn: 1024-1752 (Print) Coden: Jerdfo 42(1) (2019) 116-121
- [5] J Wang, H. H. Lou, F. Yang, and F. Cheng., 2016 "Development and Performance Evaluation of A Clean-Burning Stove," *J. Clean. Prod.*, pp. 1-9, 2016.
- [6] Arif Effendy and Suluh Sallolo, 2014 "Study of Performance Improvement Of Various Stoves With Waste Biomass Briquettes Fuel", *The 1<sup>st</sup> International Symposium On Smart Material and Mechatronics*, Universitas Hasanuddin, pp 39-45, (2014).
- [7] Olalekan Bukola Bolaji and Ayoola Olalusi, 2009 "Development of An Coal stove For Cooking Developing Countries. Departement Of Mechanical Engineering, University Agriculture, Abeokuta Oegon, Nigeria
- [8] Er Bhakta et all, 2015 "Institutional Gasifier Stove: A Sustainable Prospect For Institutional Cooking Departement Of Mechanical , Pulchowk Campus, Institute Of Engineering, Tribhuvan University